

Human Trafficking Prevention: *Resources for Developing Trauma-Informed Systems*

Adverse Childhood Experiences (ACEs) and Positive Childhood Experiences (PCEs) in American Indian and Alaska Native Communities

The Substance Abuse and Mental Health Services Administration (SAMHSA) defines ACEs as stressful or traumatic events, including abuse and neglect. ACEs are known to have lifelong detrimental impacts on a person's well-being. While many ACEs materials exist, few focus on American Indian and Alaska Native children. The Center has compiled those in this resource list along with links to other websites and tools that may be helpful for agencies as they work to support Tribal children, youth, and families.

Survivor-Centered Webinar Series on Sex Trafficking of Native Women

The National Indigenous Women's Resource Center hosted this four-part webinar series on supporting sex trafficking survivors. The first webinar lays a thorough foundation for understanding sex trafficking of Native women, including risk factors, power and control over victims, various trafficking models and survivor centered responses.

- [Trauma-Informed Approaches for Supporting Domestic Trafficking Survivors](#) (1 of 4)
- [How Pimps Select Their Victims](#) (2 of 4)
- [Breaking Process and Trauma Bond](#) (3 of 4)
- [Normalizations of DV to Turning Your Wife or Girlfriend Into a Prostitute](#) (4 of 4)

The 12 Core Concepts for Understanding Traumatic Responses in Children and Families

This handout from the National Child Traumatic Stress Network offers considerations for implementing a trauma-informed response when working with trauma-exposed children, families, and communities.



Trauma-Informed Court Responses - Capacity Building Center for Courts PL 113-183 Sex Trafficking Constituency Group Webinar

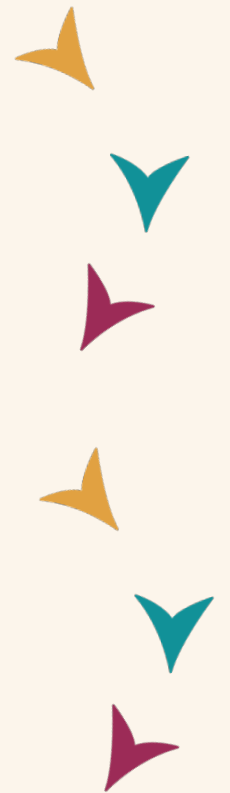
This recorded webinar provides ideas for trauma-informed court responses to sex trafficking. It featured the Center for Court Innovation, the National Council of Juvenile and Family Court Judges, and the Waupaca County, WI, child welfare agency.

Trauma – What Child Welfare Attorneys Should Know

This document discusses the impact of trauma, provides practice tips for incorporating trauma-informed practices into legal representation, includes resources to assist when representing clients with histories of trauma, and builds awareness of secondary traumatic stress and the need for prevention, identification, and self-care among legal professionals.

Human Trafficking Power and Control Wheel

This tool, from the National Indigenous Women’s Resource Center, explains how traffickers maintain control over their victims.



This resource was created by the Capacity Building Center for Tribes, and has been updated by NTCWCIA.

ntcwcia.org
1-855-780-4047
info@ntcwcia.org